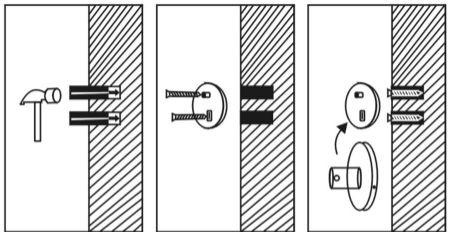


Please read this Instruction Manual carefully to ensure the product has been installed correctly.

## INSTALLATIONS



## MAINTENANCE & CLEANING

1. Clean the product surface carefully with clean water or soft detergent and then dry with soft cloth.
2. Avoid scratching or damaging the surface with hard objects.
3. Don't use abrasive or corrosive products for cleaning.

[Installation Instruction]